



INTERNATIONAL SUMMER
BALLET INTENSIVE - LYON



4 SEMAINES

1 JUILLET - 27 JUILLET

DANSEURS ADO/ADULTES NIVEAU
INTERMÉDIAIRE À PROFESSIONNEL



ÉCOLE DE DANSE

LYON DANCE STUDIOS

LYONDANCESTUDIOS.FR

LIEU: OPÉRA : 4 RUE COUSTOU - LYON 1 - MAIL: LYONDANCESTUDIOS@GMAIL.COM - TEL: 06-35-43-01-88



KARINE SENECA

BALLETT ZÜRICH, DEUTSCHE OPER AM RHEIN,
BALLETT DER STAATSOOPER HANNOVER, BOSTON BALLETT,
COMPAGNIE DE BÂLE



JULIAN NICOSIA

L'OPÉRA DE LYON
CHORÉGRAPHE INTERNATIONAL
ASSISTANT CHORÉGRAPHIQUE - MAÎTRE DE BALLETT
DRESDEN FRANKFURT DANCE COMPANY



CORALIE LEVIEUX

SOLISTE L'OPÉRA DU RHIN
SOLISTE L'OPÉRA DE LYON



MATHIEU ROUVIÈRE

BALLETT ZÜRICH, COMPAÑIA NACIONAL DE DANZA,
GRANDS BALLETS CANADIENS MONTRÉAL L'OPÉRA DE LYON



AMBER NEUMANN

THE JOFFREY BALLETT CHICAGO,
BALLETT STAATSTHEATER AUGSBURG, BALLETT HAGEN, PROFESSEURE DE
THE JOFFREY BALLETT ACADEMY CHICAGO



RAÚL CASASOLA

BOSTON BALLETT, BALLETT DE L'OPERA NATIONAL DU RHIN,
THE JOFFREY BALLETT CHICAGO, PROFESSEUR PRINCIPAL DE
THE JOFFREY BALLETT ACADEMY CHICAGO



JEANETTE KAKAREKA

SAN FRANCISCO BALLETT, ENGLISH NATIONAL BALLETT,
SOLISTE BAYERISCHES STAATSBALLETT



BREATHING ART COMPANY

ATELIER | PROJET | SPECTACLE - DANSE CONTEMPORAINE AVEC CIE BAC
BARI, ITALIE



Bienvenue

**Hello dear friends,
It's that time our year again as we formally
invite you to the International summer ballet
intensive/ISBI - Lyon.**

**Below we've attached some
important information to help you plan to join the
program this summer.**

**Please take precautions that as additional information
becomes available, this summer program guide will be
updated on our website.**

**If you have any questions, please contact
lyondancestudios@gmail.com
We look forward to seeing you at the summer program.**

**Warm regards,
The International Summer Ballet Intensive team
Lyon Dance Studios team**



LYON, FRANCE

Our studios are located in center city Lyon, France about 400 meters from Hotel de ville and L'opera de Lyon.

We are also 400 meters from the metro where you can easily access supermarkets, shopping etc.

If at all during the week you need dance supplies we have two dance boutiques in the city that we can inform you about at a later period if you need.

Our studios will welcome you with over 250m2 of space dedicated to dance. They allow a comfortable setting to be able to connect and take care of each student individually.

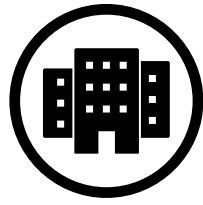
Our studios are equipped with Harlequin flooring, and well suited for ballet. During each week we will be offering ballet, dancer conditioning, Contemporary, street jazz and modern jazz.

ISBI brings many young talented students training mainly in the ballet discipline from ages 13 and up in one place for the 4 weeks.

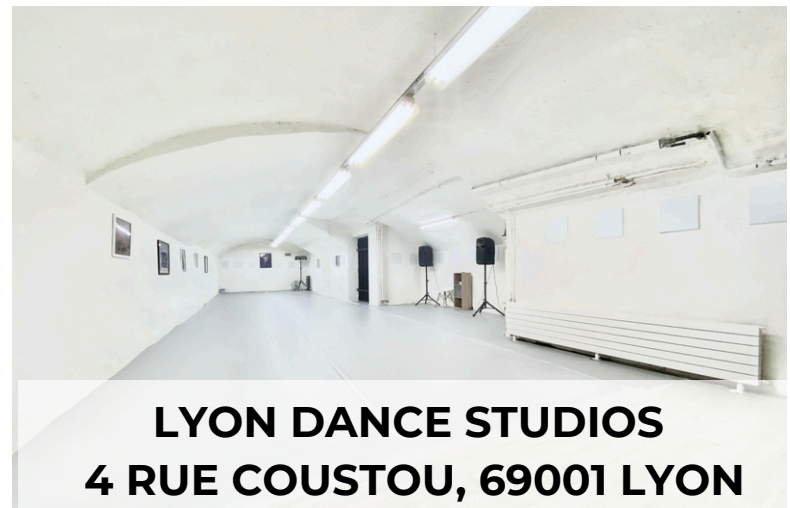
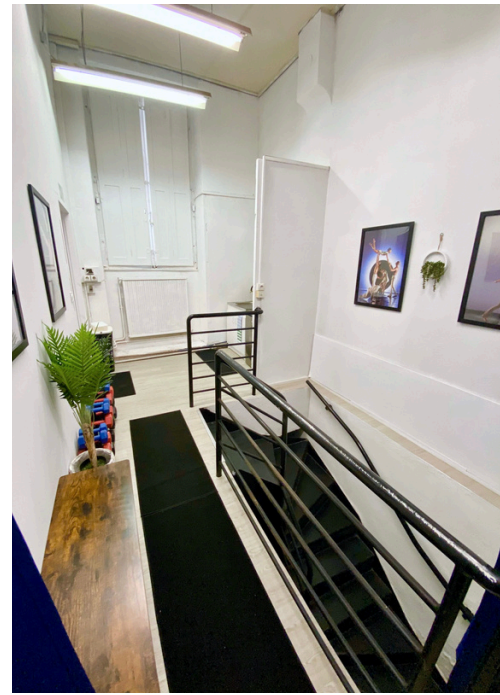
During each week there will be a proposed activity to get to discover Lyon as well as create friendships with some of the other dancers in the program.

We do not have a food plan, but we can offer extra assistance if you need it. If not, there are many supermarkets and restaurants nearby offering you many options.

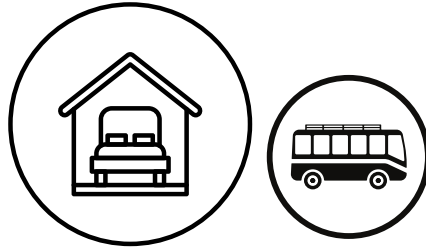
Depending on your chosen forfait you may participate in as many classes as you would like. Below on the following page there will be the tuition pricing as well as information concerning housing options, and transportation (airport/train).



STUDIOS



LYON DANCE STUDIOS
4 RUE COUSTOU, 69001 LYON



ACCOMODATION & TRANSPORT



STAY IN LYON
CENTRE VILLE



AÉROPORT DE
LYON-SAINT EXUPÉRY



LYON PART DIEU
LYON GARE PERRACHE
LYON SAINT-EXUPÉRY TGV

Lyon Dance Studios does not offer any specialized housing on site for our summer program. We have listed a couple hotel/hostel (more inexpensive options) options not far from the studios below that can possibly help you with your selection. We are not partnered with any sort of hotel or hostel. You may also find many options on websites such as AirBnb.

We can offer depending on availability a free shuttle from the airport to the hotel that you are staying at. There is also a very quick train service from the airport that runs every 30 minutes called the Rhone Express.

Please send an email with the time you arrive if you plan to use the shuttle service with the provided email address on the contact page.



Slo Lyon Pentes -
21 Rue Alsace Lorraine, 69001 Lyon



Pilo Hotel -
10 Mnt des Carmélites, 69001 Lyon



CONTACT

Confirmation of your attendance to the summer program is only done by filling out the formulaire provided along with an attached photo in arabesque. Until then we cannot guarantee your place in the program.

If you have any further questions you may contact us via our email, or contact us with the provided contact information given below.

Thank you and we hope to meet you soon!

LYONDANCESTUDIOS.FR

LIEU: OPÉRA : 4 RUE COUSTOU - LYON 1 - MAIL: LYONDANCESTUDIOS@GMAIL.COM - TEL: 06-35-43-01-88

*** Réservez maintenant à l'école. Il y aura des places limitées**